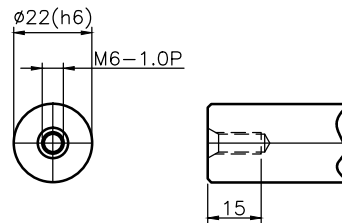
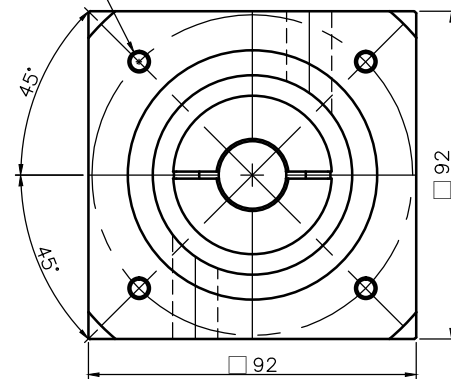


Shaft Option 1(K)



Shaft Option 2(S)



Inertia : 1.15~1.31 kg*cm²

Mass : 8.05kgs

Reduced Backlash : <=7

Standard Backlash : <=9

Bushing Supplied, when the motor shaft Dia. is small then $\phi 24$ (Input Shaft Dia.)

General Tolerance		
6- 50 mm	± 0.1	
50- 120 mm	± 0.2	
120- 315 mm	± 0.3	
315- 1000 mm	± 0.5	

KJP 科駿精密工業股份有限公司
KOJIN PRECISION INDUSTRIAL CO., LTD.

圖號	MF90HL-L2-70-90-M6				Name	Date	設計	B
圖名	MF90HL組合圖				Drawing		設計	C
比例	1 : 2	版次	0	☯	Check		設計	D
					Approv.		變更	E