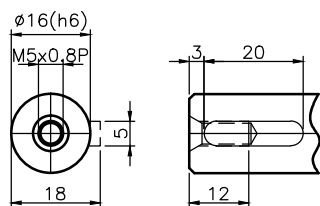
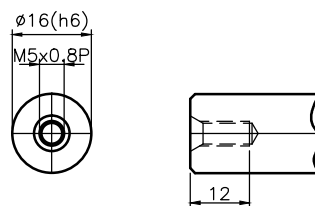


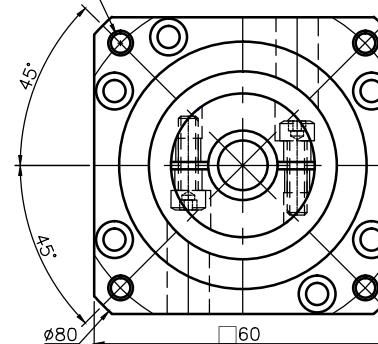
出力軸軸心↓



Shaft Option 1(K)



Shaft Option 2(S)



Inertia : 0.10~0.11 kg\*cm<sup>2</sup>

Mass : 2.26kgs

Reduced Backlash : ≤4

Standard Backlash : ≤6

Bushing Supplied, when the motor shaft Dia. is small then  $\phi 14$  (Input Shaft Dia.)

General Tolerance

6- 50 mm	±0.1
50- 120 mm	±0.2
120- 315 mm	±0.3
315- 1000 mm	±0.5



科駿精密工業股份有限公司  
KOJIN PRECISION INDUSTRIAL CO., LTD.

圖號 MF60HL-L1-50-70-M5

圖名 MF60HL組合圖

比例 3 : 4 版次 0

Drawing

Check

Approv.

Name

Date

設計

變更

B

C

D

E