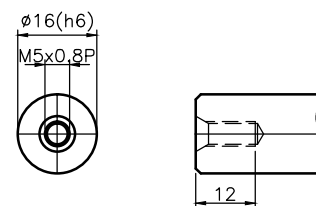
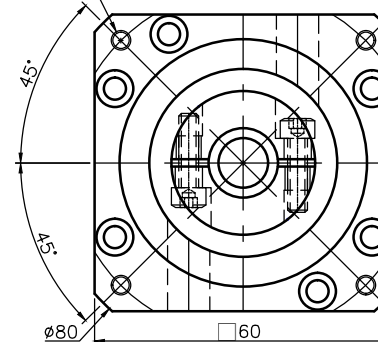


Shaft Option 1(K)



Shaft Option 2(S)



Inertia : 0.10~0.11 kg\*cm<sup>2</sup>

Mass : 2.26kgs

Reduced Backlash : ≤4

Standard Backlash : ≤6

Bushing Supplied, when the motor shaft Dia. is small then  $\phi 14$  (Input Shaft Dia.)

General Tolerance		
6- 50 mm	±0.1	
50- 120 mm	±0.2	
120- 315 mm	±0.3	
315- 1000 mm	±0.5	



科駿精密工業股份有限公司  
KOJIN PRECISION INDUSTRIAL CO., LTD.

圖號	MF60HL-L1-50-70-M4		
圖名	MF60HL組合圖		
比例	3 : 4	版次	0

Drawing	
Check	
Approv.	

Name	
Date	

設計	B
變更	C
變更	D
變更	E