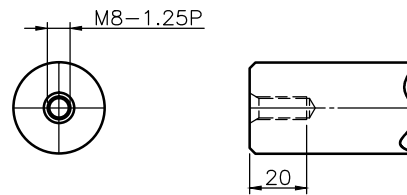
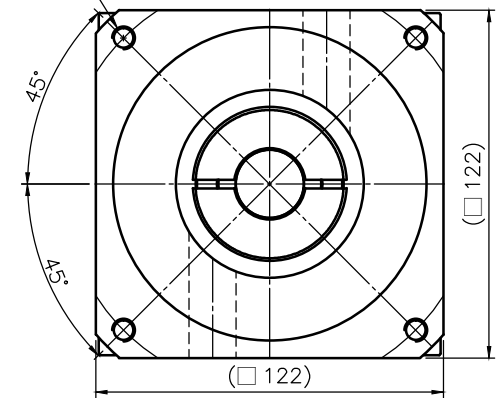


Shaft Option 1(K)



Shaft Option 2(S)



Inertia : 2.48~2.91kg*cm²

Mass : 13.5kgs

Reduced Backlash : <=4

Standard Backlash : <=6

Bushing Supplied,when the motor shaft Dia. is small then ø24(Input Shaft Dia.)

| General Tolerance | | |
|-------------------|------|--|
| 6- 50 mm | ±0.1 | |
| 50- 120 mm | ±0.2 | |
| 120- 315 mm | ±0.3 | |
| 315- 1000 mm | ±0.5 | |



科駿精密工業股份有限公司
KOJIN PRECISION INDUSTRIAL CO., LTD.

| | | | | | | | |
|----|-----------------------|----|---|---------|------|----|---|
| 圖號 | MF120HL-L1-110-145-M8 | | | Name | Date | 設計 | B |
| 圖名 | MF120HL組合圖 | | | Drawing | | 設計 | C |
| 比例 | 2 : 5 | 版次 | 0 | Check | | 設計 | D |
| | | | | Approv. | | 變更 | E |